

OPENING UP NEW DIMENSIONS

OF HUMAN NEUROPHYSIOLOGY AND FEEDBACK TRAINING



EEG • DC-EEG • SCP • ERP • P300 • EOG • HEG • VEP • EMG • RSP • ECG • HRV • TEMP. • SPO2 • BVP • SC/GSR • ACCEL • FORCE

PHYSIOLOGICAL COMPUTING AND FEEDBACK SOLUTIONS FOR BRAIN, BODY AND BEHAVIOUR

The interaction between the brain and body, and the way the nervous system, health and behaviour, are linked, have become central themes for exploration in the fields of psychology, neuroscience and evidence-based medicine. The technology and principles of Biofeedback and Neurofeedback have been applied clinically for the improvement of health, performance and emotional and behavioral patterns for over 20 years. The Mind Media team has, since 1992, been dedicated to provide you with the best technology for these applications. We now bring you our ultimate achievement: the NeXus-10 Mark II, truly "the Swiss army knife" of Bio/Neurofeedback.

Whether you are a beginning or advanced user, whether you are a clinician or researcher, this new system provides you with unprecedented flexibility and reliability.

BETTER SIGNALS: ACTIVE NOISE CANCELLATION

Signal quality is key! Working with physiological signals at the microvolt level means that we must take great care in reducing artifacts and rejection. NeXus uses proprietary carbon technology in its EXG sensor cables, in combination with active noise cancellation technology. Instead of "hiding" noise and artifacts with the classic filter approach, we simply measure the external noise and subtract it, resulting in cleaner signals and less artifacts.

CONCISE TECHNICAL SPECIFICATIONS

Size (approx.)	120 x 140 x 45mm
Weight (approx.)	500 grams
Power	8000 mAh Lithium Polymer pack
Battery life	24+ hours
ADC output	24 bits
EXG channels	4
AUX channels	4
Digital channels	2 to 16
EXG bandwidth	DC to 2 KHz. (ultra-wideband)
EXG sample rate	8192 samples/sec (max)
EXG dynamic Range	+/- 200,000 μ V (pk-pk)
AUX sample rate	128 samples/sec (max)
Data link/media	Bluetooth (wireless), USB and SD card
Warranty	up to 3 years on the encoder

NeXus is manufactured in an ISO 13485 certified facility (Netherlands, TMSI BV), is FDA registered and certified as a medical CE class IIa device.

BETTER SENSORS, BETTER CONNECTORS: MORE RELIABILITY

If the NeXus, metaphorically speaking, was a 20+ megapixel digital camera, what about the lens quality? Having lots of megapixels with a poor lens won't deliver the picture you desire. That is why NeXus engineers undertook extensive research and development work on the sensors and carbon technology. It is also the reason why we use heavy duty, brushed metal connectors that lock in – meaning less worries about poor contacts, bent pins or broken connectors.

BETTER CONNECTIVITY: WIRELESS DESIGN

Connecting to your PC with a cable can really limit your freedom to move around while using the equipment. That is why the Mark II, like its predecessor, the NeXus-10, comes with built-in wireless Bluetooth. It is also a fully ambulatory system that can work stand-alone and store more than 24 hours of data on a SD flash card. But as always, NeXus does not ask you to compromise: we also added a USB 2.0 wired link for those of you who require higher sample rates.



MORE POWERFUL: LITHIUM POLYMER TECHNOLOGY

Mind Media integrated a state of the art Lithium-Polymer battery pack into the Mark II, offering over 24 hours of operation on a single charge. A built-in supercapacitor allows you to switch battery packs without interrupting recording.

ULTRA WIDE-BAND AMPLIFIERS: MORE COST-EFFECTIVE

Because of its unique amplifier design and carbon technology, you don't only get better signals, but you even save money! For the typical price of a single (1 channel) active sensor, the NeXus EXG cable gets you 2 channels of EEG, or DC-EEG, sEMG, ECG, EOG, or a combination. When you take sensor cost into account, you will be pleased to discover how cost-effective NeXus is!

BETTER RESOLUTION: 24-BIT

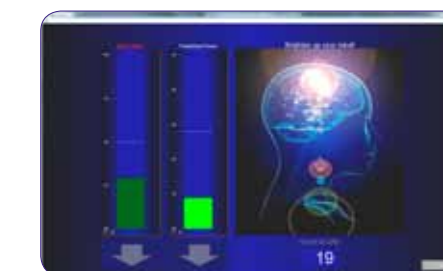
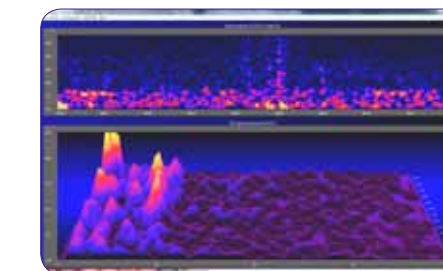
In a digital world, resolution is everything. When you buy a digital camera, it makes no sense anymore to accept less than 10 megapixels. A two megapixel camera would show blurred images as soon as you zoom in or start looking at any detail. The same is true for physiological signals. NeXus uses 24-bit technology, resulting in ultra-high resolution and greater dynamic range.

DIGITAL SENSORS: BETTER INTERFACING, MORE CHANNELS

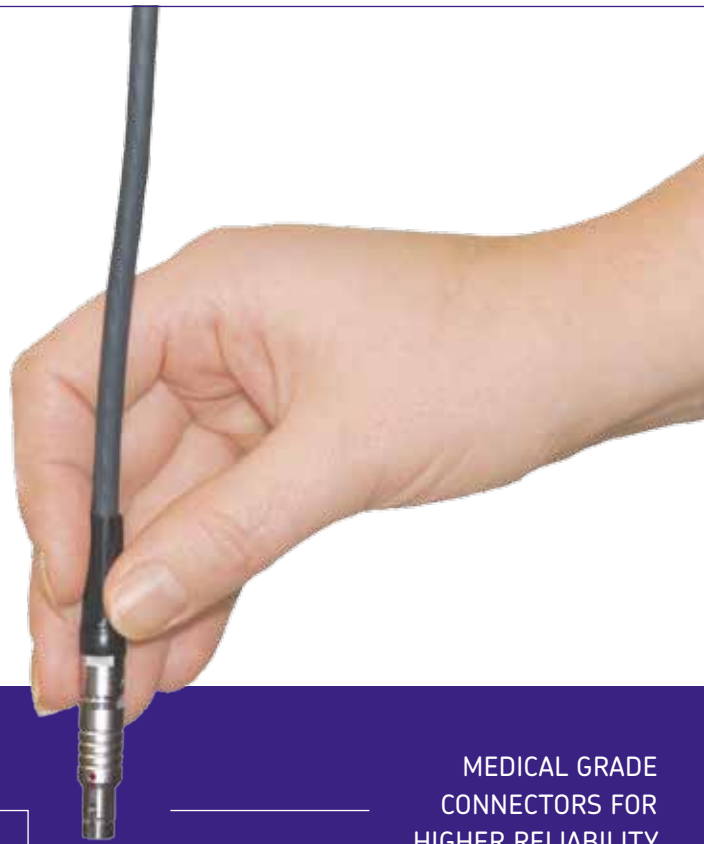
These are digital times and Mind Media is proud to introduce the new series of NeXus digital sensors. Digital sensors have a multi-channel design and extend your NeXus with 1 to 16 channels of physiology with a single connector. Whether you are a clinician or a researcher, these new digital sensors deliver a major benefit to you.

BETTER SOFTWARE: MORE FLEXIBILITY AND EASE OF USE

The BioTrace+ software offers unmatched versatility for clinicians and unmatched power for researchers. But if flexible feedback and frequency settings, user configuration, programmable data processing and graphic display sound a bit daunting – fear not! It is easier than ever to get started with NeXus! Our acclaimed, easy to use, point-and-click Biofeedback, Neurofeedback and Assessment protocol suites, that are included in the standard price, provide intuitive, stress-free guidance to putting the NeXus-10 Mark II to work for you. BioTrace+ software updates are free.



PLUG INTO THE FUTURE WITH THE
**NEXUS-10
 MARK II**



4 ANALOG AUX INPUTS FOR A WIDE RANGE OF SENSORS

4 ANALOG EXG INPUTS WITH UP TO 8192 SAMPLES/SEC.

MEDICAL GRADE CONNECTORS FOR HIGHER RELIABILITY

ACTIVE NOISE CANCELLATION FOR PRISTINE SIGNAL QUALITY

ORGANIC LED DISPLAY FOR SYSTEM STATUS INFORMATION

INTEGRATED WIRELESS BLUETOOTH FOR MORE FREEDOM TO MOVE

LITHIUM POLYMER BATTERY PACK FOR 24H+ RECORDING

ULTRA-HIGH 24-BIT AD RESOLUTION FOR GREATER PRECISION

STAND-ALONE RECORDING ON SD FLASH CARDS

DIGITAL EVENT AND TRIGGER INPUT FOR HIGH PRECISION SYNCHRONIZATION

FAST USB 2.0 WIRED LINKED FOR HIGHER SAMPLE RATES

DIGITAL SENSOR INPUT FOR UP TO 16 EXTRA CHANNELS

... AND EXPERIENCE WHY NEXUS IS THE ULTIMATE
 BIO- AND NEUROFEEDBACK PLATFORM!



ABOUT MIND MEDIA

Since its foundation in the Netherlands in 1992, Mind Media has been creating leading-edge products for Physiological Research, Biofeedback and Neurofeedback. In 2004, Mind Media launched the NeXus system with BioTrace+ software: it quickly became recognized by many as the best Biofeedback and Neurofeedback technology in the world. The NeXus family currently consists of systems with 4 to 32 channels. Take for example our NeXus-32F system: this is a (USB & Wireless) 21 channel digital EEG system with QEEG export, real-time Neuromapping, Biofeedback and Neurofeedback functions.

Mind Media is an international organization with reseller networks in over 50 countries. We will be happy to assist you with any questions you may have regarding our NeXus product line and BioTrace+ software.

MIND MEDIA BV SCHEPERSWEG 2B, 6049 CV, ROERMOND-HERTEN, NETHERLANDS, TEL +31 (0)475-410123
 E-MAIL: SALES@MINDMEDIA.NL WEB: WWW.MINDMEDIA.INFO



NEXUS



NEXUS-10 MARK II

WORLD-LEADING TECHNOLOGY FOR PHYSIOLOGICAL RESEARCH
 BIOFEEDBACK AND NEUROFEEDBACK APPLICATIONS